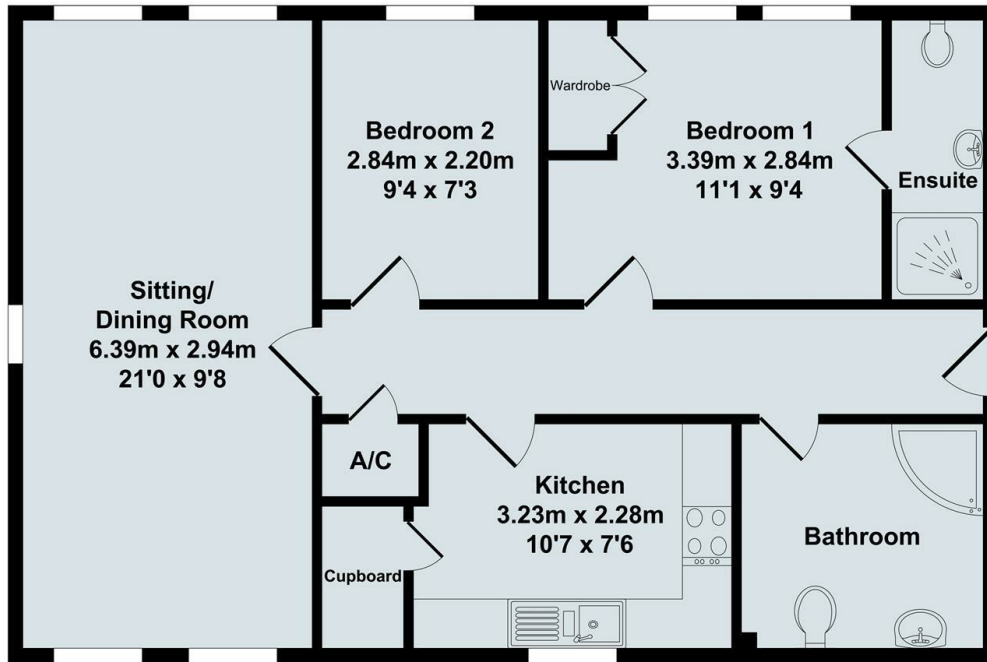




59 Rewley Road, Oxford, OX1 2RG

£1,500 PCM

- Two bedrooms
- Ground floor
- EPC Rating C
- Two bathrooms
- Gas CH
- Council Tax Band D
- Unfurnished
- Parking for one car



Total Approx. Floor Area 62.32 Sq.M. (671 Sq.Ft.)

Directions

Viewings

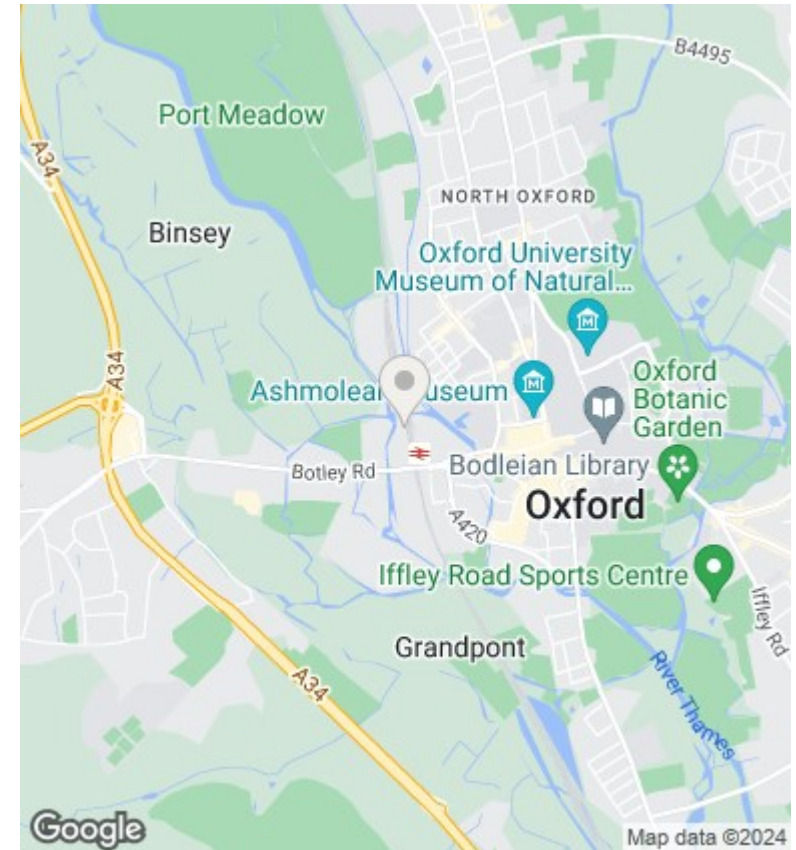
Viewings by arrangement only. Call 01865 515900 to make an appointment.

Council Tax Band

D

EPC Rating:

C



Energy Efficiency Rating		
	Current	Potential
Very energy efficient - lower running costs		
(92 plus) A		
(81-91) B		
(69-80) C	72	76
(55-68) D		
(39-54) E		
(21-38) F		
(1-20) G		
Not energy efficient - higher running costs		
England & Wales	EU Directive 2002/91/EC	